

9350 S 150 E  
Sandy, UT

- For Lease
- Located in Jordan Commons Commercial
- Available: 6,405 +/- SF & 8,084 +/- SF



## PROPERTY HIGHLIGHTS

- Available Office Spaces: 6,405 +/- Sq. feet & 8,804 +/- Sq. feet
- Directly across from UTA Trax Sandy Expo Station
- Ample parking stalls including covered parking
- Adjacent to Mountain America Expo Center and the Rio Tinto Soccer Stadium



## DEMOGRAPHICS

Population	1 Mile	3 Mile	5 Mile	Income	1 Mile	3 Mile	5 Mile
2020 est.	14,558	127,746	316,495	2020 avg HHI	\$77,409	\$95,226	\$106,212
2025 est.	15,897	136,183	334,971	2025 med HHI	\$65,743	\$77,644	\$85,206

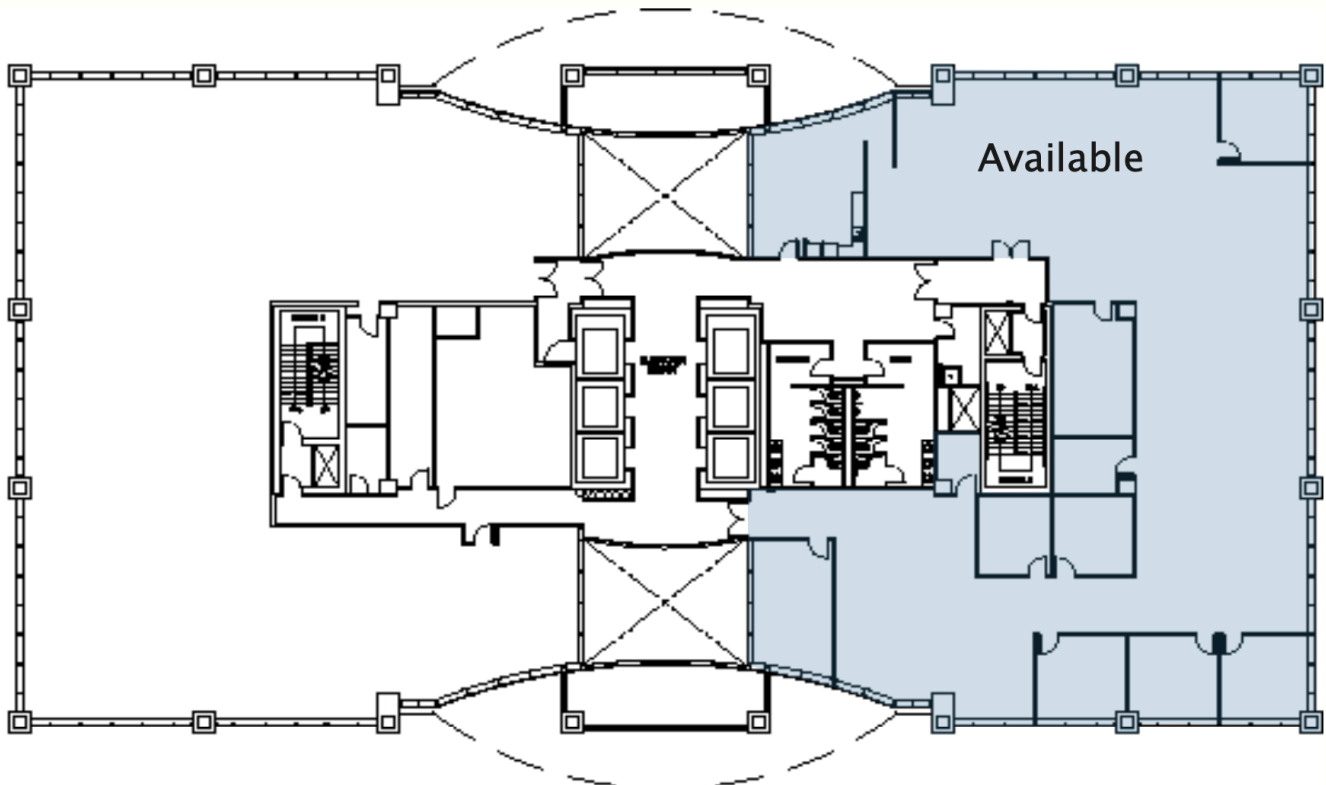
## GET IN TOUCH

**Dee R. Hansen**  
801-540-2002 cell  
801-274-2002 office  
dh@drhco.com

**Katie Saichek**  
801-573-5185 cell  
801-274-2211 office  
katie@drhco.com

Sandy, UT

Second Floor Tower: \$8,084 +/- Sq. feet



## DETAILS

- Office space for lease
- 8,084 +/- square feet
- 6 offices
- 2 conference rooms

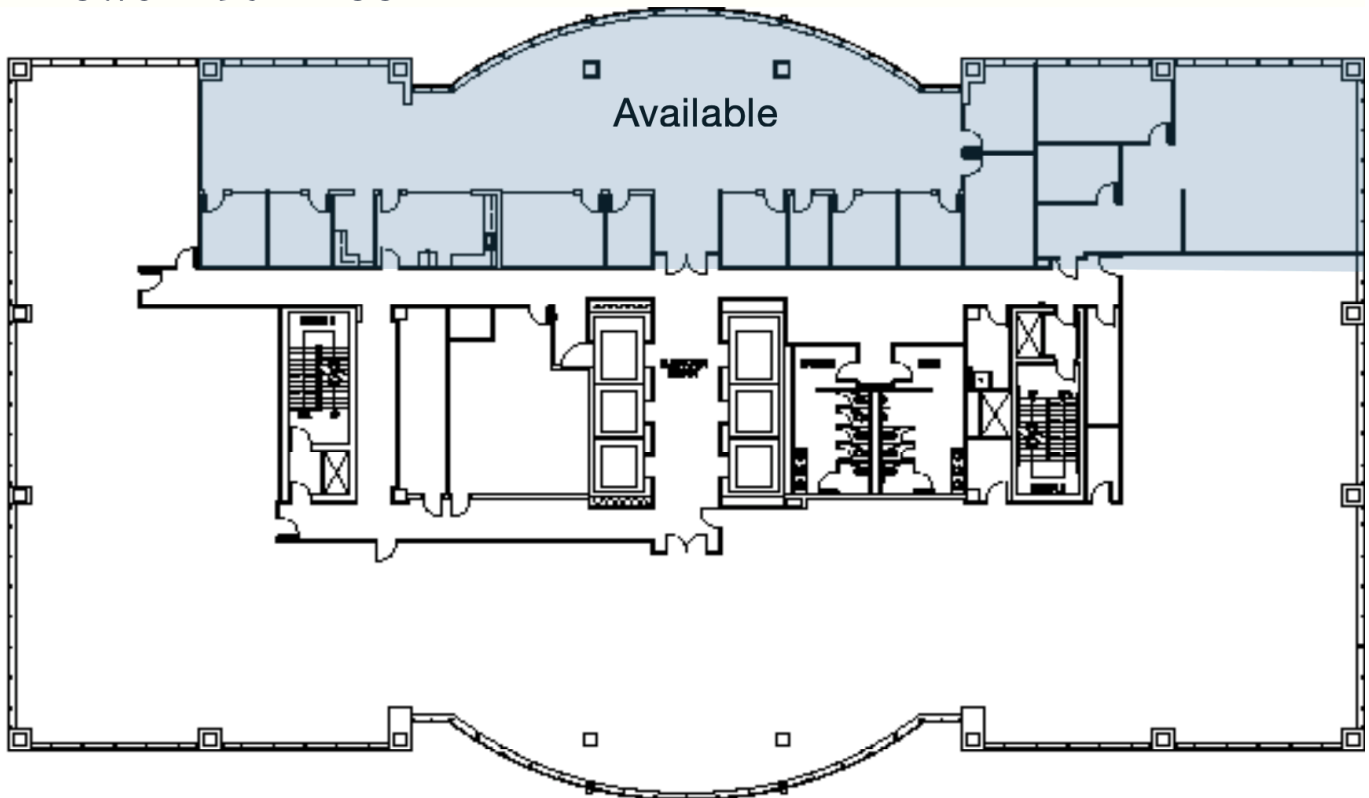
## GET IN TOUCH

**Dee R. Hansen**  
801-540-2002 cell  
801-274-2002 office  
dh@drhco.com

**Katie Saichek**  
801-573-5185 cell  
801-274-2211 office  
katie@drhco.com

Sandy, UT

Seventh Floor Tower: \$6,405 +/- Sq. feet



## DETAILS

- Office space for lease
- 6,405 +/- square feet
- 7 offices
- 3 conference rooms
- 1 break room
- 3 stand-up / huddle rooms

## GET IN TOUCH

**Dee R. Hansen**  
801-540-2002 cell  
801-274-2002 office  
dh@drhco.com

**Katie Saichek**  
801-573-5185 cell  
801-274-2211 office  
katie@drhco.com

# 9350 S 150 E

DRH **co**

Sandy, UT



## GET IN TOUCH

**Dee R. Hansen**  
801-540-2002 cell  
801-274-2002 office  
dh@drhco.com

**Katie Saichek**  
801-573-5185 cell  
801-274-2211 office  
katie@drhco.com